

# WB I-395 RAMP TO NB I-95

OR TOLL BY PLATE  
WEST  
834

EXIT 1B

LAST FORT  
Ft.

1B  
EXIT  
40 MPH

■ The existing westbound I-395 ramp to northbound I-95



# I-395/SR 836/I-95 DESIGN-BUILD PROJECT

Financial Project Numbers: 251688-1-52-01, 423126-1-52-01, 423126-2-52-01, 429300-2-52-01

Community  
Safety  
Mobility  
Sustainability



The I-395/SR 836/I-95 Project is a partnership between the Florida Department of Transportation (FDOT) and the Miami-Dade Expressway Authority (MDX), with construction limits on State Road (SR) 836 beginning at NW 17 Avenue and continuing through the SR 836/I-395/I-95 (Midtown) Interchange to the MacArthur Causeway Bridge. The limits on I-95 are from NW 8 Street to NW 29 Street. The project is expected to be completed in the fall of 2023 at a cost of \$802 million. This schedule could change due to weather or other unforeseen circumstances.

## COMMUNITY OUTREACH

The project team looks forward to informing the community of all project milestones and creating a solid understanding of the proposed improvements.

The project office is currently located at:  
**1035 NW 3 Avenue, Miami, Florida 33136**

For the latest project information visit:  
[I-395Miami.com](http://I-395Miami.com)

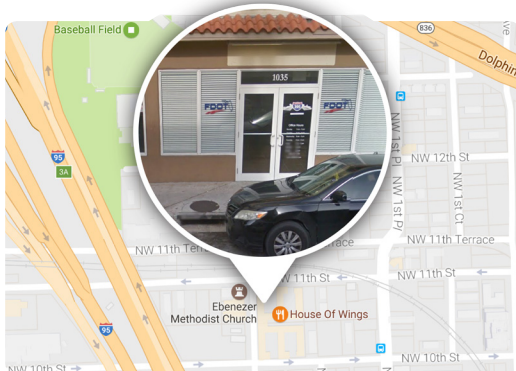
### THIS PROJECT WILL:

Transform our **COMMUNITY** by reconstructing I-395, including an iconic bridge over Biscayne Boulevard and allow for the connection of Overtown, Downtown Miami, Omni, and Edgewater to each other by a contiguous trail that includes community activity areas.


Increase **MOBILITY** for residents, commuters and tourists by increasing capacity on SR 836, I-95 and I-395. SR 836 will be double-decked to allow for a direct connection between SR 836 and the MacArthur Causeway. Mobility in Overtown will also be improved with the connection of NW 2 Avenue under I-395 and improvements to arterial roads.


Enhance **SAFETY** for commuters by reducing weaving movements associated with drivers entering and exiting SR 836 and I-95 at the Midtown Interchange. Safety will also be enhanced for pedestrians under the new bridges with creation of the trail and enhanced crosswalks.

Be designed and constructed with **SUSTAINABILITY** in mind for commuters, residents and local maintaining agencies. The features of the trail have been designed to incorporate long term durability and sustainability while achieving aesthetic and community enhancements.



 **Oscar Gonzalez III**  
Senior Community Outreach Specialist  
Cell: 786-280-0983  
[OGonzalez@mrgmiami.com](mailto:OGonzalez@mrgmiami.com)

 **Maria Perdomo, P.E.,**  
Design Project Manager  
FDOT District Six  
1000 NW 111 Avenue, Miami, FL 33172  
[Maria.Perdomo@dot.state.fl.us](mailto:Maria.Perdomo@dot.state.fl.us)

 **Jacqueline Sequeira, P.E.,**  
Construction Project Manager  
FDOT District Six  
1000 NW 111 Avenue, Miami, FL 33172  
[Jacqueline.Sequeira@dot.state.fl.us](mailto:Jacqueline.Sequeira@dot.state.fl.us)

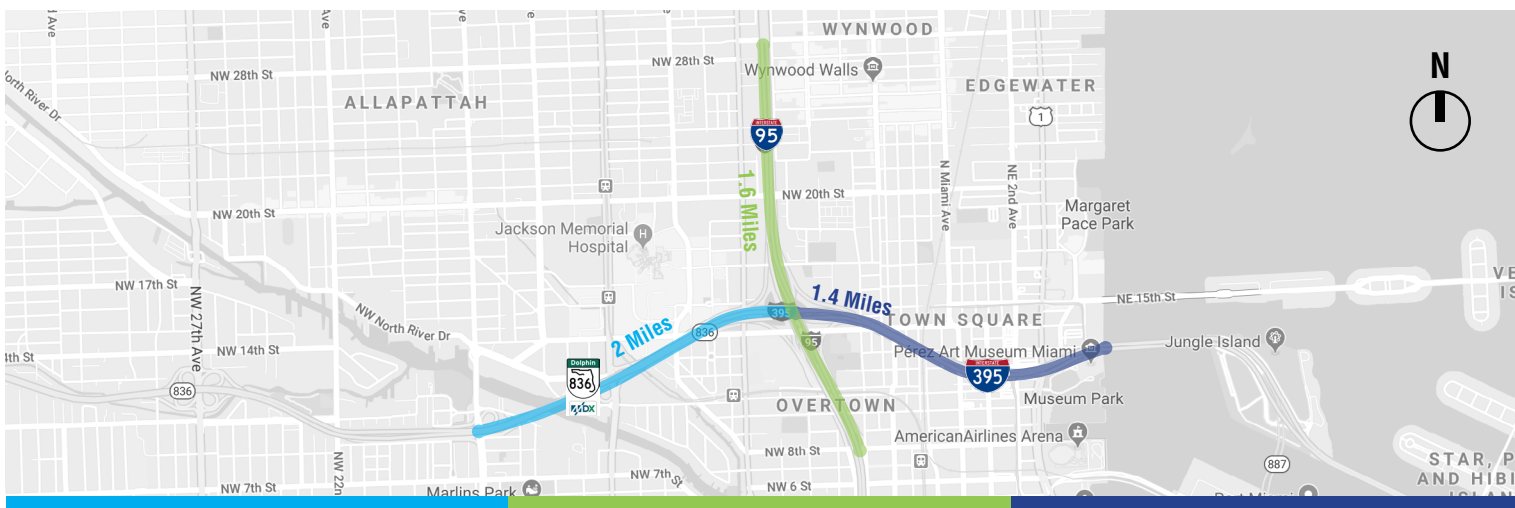




## DOUBLE-DECKED SR 836



## SIGNATURE BRIDGE



### SR 836 ENHANCEMENTS

This project is a continuation of MDX's work program to modernize the SR 836 corridor. The enhancements on SR 836 are from NW 17 Avenue to the Midtown Interchange. These enhancements include double-decking SR 836, beginning just east of the toll gantry at NW 17 Avenue, rising over the center of SR 836, and touching down at I-395, east of the I-95 interchange. The double-decked section will provide drivers with a direct connection to the MacArthur Causeway that is free of local entry and exit traffic. The existing SR 836 roadway and bridges will serve as a collector distributor system that allows drivers to enter and exit from the existing local roads and I-95. This collector distributor system will reduce the existing weaving movements resulting in enhanced safety and better traffic operations on SR 836. In addition, the existing eastbound SR 836 ramp to northbound I-95 will be widened to include an additional lane reducing the congestion that drivers currently experience.

### I-95 CONCRETE PAVEMENT RECONSTRUCTION

These enhancements are from NW 8 Street to NW 29 Street and include the total replacement of the concrete pavement for both the northbound and southbound travel lanes.

An auxiliary lane will be added along northbound I-95 from north of NW 17 Street to NW 29 Street to receive the additional traffic from the eastbound SR 836 ramp to northbound I-95 and enhance the flow of traffic through the Midtown Interchange.

The project also includes the construction of a new connector ramp from southbound I-95 to westbound SR 836.

This new connector ramp will enhance the flow of traffic and reduce weaving movements. This portion of the project will also enhance safety.

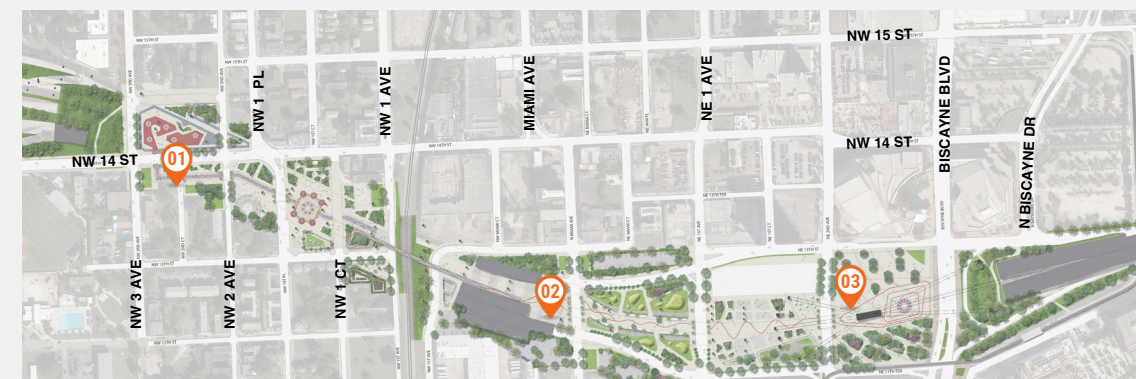
### I-395 RECONSTRUCTION ENHANCEMENTS

Enhancements along I-395 are from the SR 836/I-95/I-395 (Midtown) Interchange to the MacArthur Causeway, approximately 1.4 miles long. The project will completely reconstruct the existing facility and create a signature bridge that will span 1,025 feet over NE 2 Avenue and SR5/ Biscayne Boulevard, redefining the Miami skyline with its six sweeping arches.

The project will create additional capacity on I-395 with a total of three through lanes in each direction and provide separate connector ramps for traffic to and from I-95.

The existing I-395 eastbound off-ramps at NE 2 Avenue will be moved west to North Miami Avenue, and the westbound on-ramps at NE 1 Avenue will be shifted to the west of North Miami Avenue. NW 2 Avenue will also be reconnected under I-395, providing residents greater access.

## COMMUNITY ACTIVITY SPACES UNDER I-395



The centerpiece of this project is the signature bridge that changes the City's skyline and becomes an iconic symbol that our community can be proud of. The signature bridge and the adjoining structures will allow for the transformation of the area underneath to vibrant community spaces linked together by a contiguous trail for the enjoyment of Overtown residents, nearby communities and visitors.

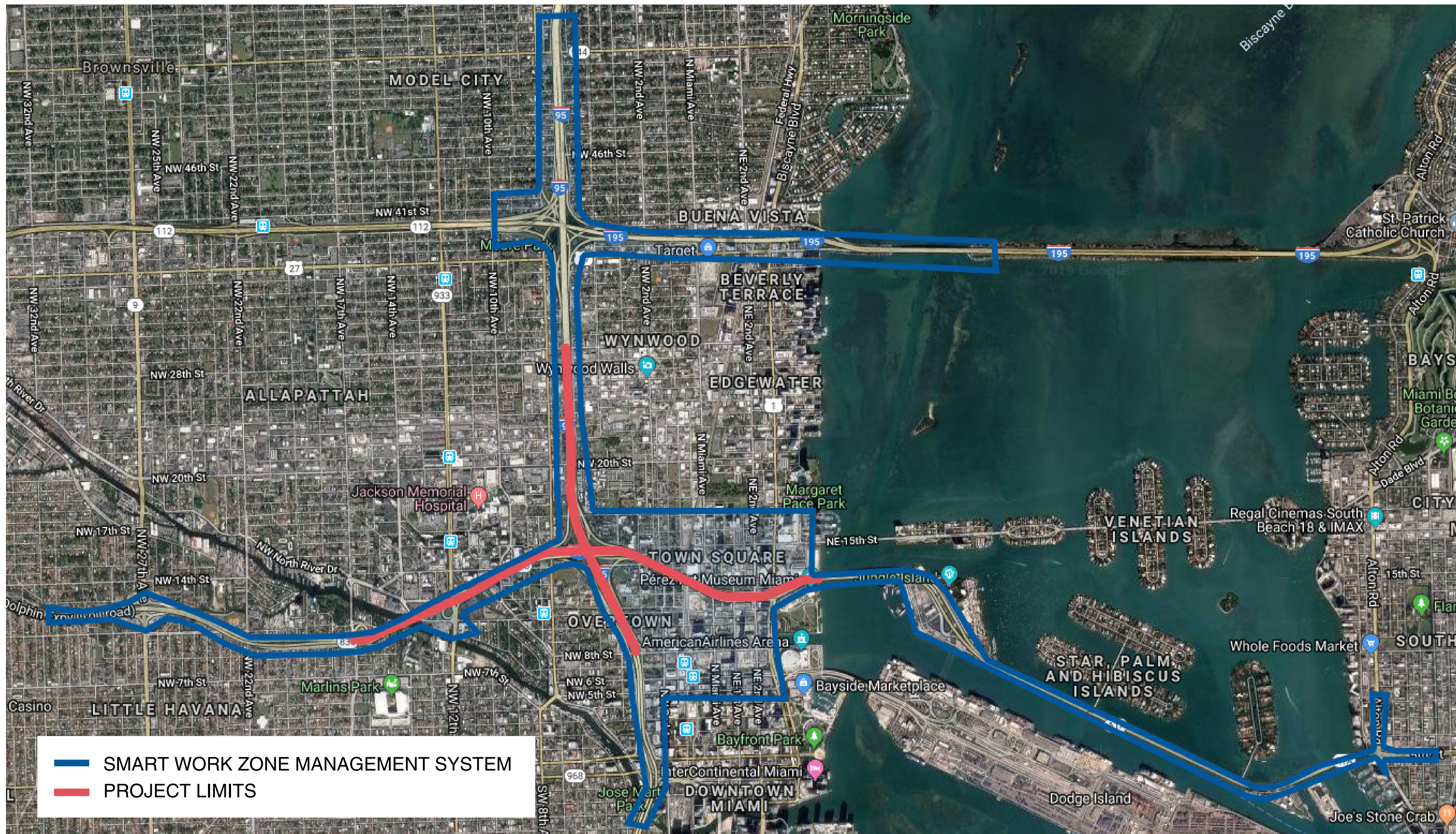


The Department is committed to building the proposed common spaces and is actively working with our local agencies to identify partners to operate and maintain them.

### PROJECT BENEFITS INCLUDE:

- Adding capacity to SR 836 from NW 17 Avenue to I-95 to enhance traffic flow
- The double-decked section of SR 836 will provide a direct connection to the MacArthur Causeway
- Adding an additional lane to the eastbound SR 836 ramp to northbound I-95, enhancing the flow of traffic and safety
- Adding an auxiliary lane along northbound I-95 from north of NW 17 Street to NW 29 Street to accommodate the additional traffic from the eastbound SR 836 ramp to northbound I-95
- New connector ramp from I-95 southbound to SR 836 westbound will enhance traffic flow and reduce weaving movements
- I-395 will provide three through lanes in each direction and provide separate connector ramps for traffic to and from I-95
- The existing I-395 on and off-ramps will be moved west to North Miami Avenue, resulting in improved traffic flow by allowing additional routes for traffic to travel north and south of I-395
- 30 acres of usable space will be created under the I-395 bridges including a continuous trail from NW 3 Avenue to Biscayne Boulevard
- A new pedestrian bridge over the FEC (Brightline) Railroad to allow for safer pedestrian crossing and connectivity

## SMART WORK ZONE MANAGEMENT SYSTEM (SWZMS)



The project will implement a SWZMS that will utilize Intelligent Transportation System (ITS) Devices such as traffic cameras, data collection devices and portable message signs to:

- Provide drivers with real-time travel information;
- Encourage motorists to take alternate routes;
- Clear incidents more quickly, thereby reducing secondary incidents; and
- Make work zones safer for highway workers and motorists

# I-395/SR 836/I-95 DESIGN-BUILD PROJECT

Financial Project Numbers: 251688-1-52-01, 423126-1-52-01, 423126-2-52-01, 429300-2-52-01

8-25-2021

## WEEKLY PROJECT UPDATE

### WESTBOUND I-395 RAMP TO NORTHBOUND I-95 TRAFFIC SHIFT AUGUST 31



On **TUESDAY MORNING, AUGUST 31**, the ramp from westbound I-395 to northbound I-95 will be closed and traffic will be shifted to a temporary single-lane ramp on the left side of the road. Variable Message Signs (VMS) will direct drivers going west on I-395 who want to go north on I-95 to the new temporary ramp.

The temporary ramp will be in place for approximately 16 months while workers build a new permanent two-lane ramp and other I-395 bridges. To view additional information, including a video of the of the ramp shift, please [CLICK HERE](#).

*Continue reading on the next page...*

# CLOSURE OF THE NORTH BAYSHORE RAMP TO THE MACARTHUR CAUSEWAY SEPTEMBER 1



On **WEDNESDAY MORNING, SEPTEMBER 1**, the North Bayshore Drive ramp to the MacArthur Causeway will be closed to allow for the construction of the Signature Bridge foundations and the new Bayshore Ramp. A signalized left turn lane will be provided on southbound Biscayne Boulevard to allow drivers to access the MacArthur Causeway entrance ramp that is located on the south side of I-395, adjacent to the Phillip and Patricia Frost Museum of Science.

This traffic pattern will remain in effect until 2024. To view additional information, including a video of the of the ramp shift, please [CLICK HERE](#).

*Continue reading on the next page...*

## I-95 ONGOING CONSTRUCTION ACTIVITIES

- Nighttime concrete pavement replacement on I-95 from NW 8 Street to NW 29 Street
- Laser profile testing to ensure smooth concrete driving surface
- Nighttime replacement of bridge approach slabs on I-95 from NW 8 Street to NW 29 Street
- Installation of Intelligent Transportation System devices
- Installation of new guardrail
- Bridge foundation work, including concrete pile driving just east of I-95 adjacent to NW 17 Street and under the core of the interchange
- Ongoing concrete grinding operations on I-95

## I-95 CLOSURES

- **WEDNESDAY, AUGUST 25 THROUGH FRIDAY, AUGUST 27 AND SUNDAY, AUGUST 29 THROUGH THURSDAY, SEPTEMBER 2** - Up to four lanes on southbound I-95 from NW 29 Street to NW 8 Street will be closed between the hours of 9 p.m. and 5:30 a.m. The closure on Friday will occur between the hours of 11 p.m. and 11 a.m.
- **WEDNESDAY, AUGUST 25 THROUGH FRIDAY, AUGUST 27 AND SUNDAY, AUGUST 29 THROUGH THURSDAY, SEPTEMBER 2** - Up to four lanes on northbound I-95 will be closed nightly from NW 8 Street to NW 29 Street between the hours of 9 p.m. and 5:30 a.m. The closure on Friday will occur between the hours of 11 p.m. and 11 a.m.

## SOUTHBOUND I-95 RAMP TO WESTBOUND 836 DETOUR

- **WEDNESDAY, AUGUST 25, THURSDAY, AUGUST 26 AND TUESDAY, AUGUST 31 THROUGH WEDNESDAY, SEPTEMBER 1** - The southbound I-95 ramp to westbound SR 836 will be closed between the hours of 9 p.m. and 5:30 a.m. The closures on Friday and Saturday will occur between the hours of 11 p.m. and 11 a.m. Drivers can:
  - Continue south on I-95
  - Exit at SW 7 Street/Brickell Avenue (Exit 1B), then turn left at SW 8 Street
  - Enter the northbound I-95 ramp, then access the ramp to westbound SR 836

TO VIEW A MAP OF THE DETOUR PLEASE [CLICK HERE](#).

## CLOSURE OF THE NORTHBOUND I-95 RAMP TO I-195 EAST/MIAMI BEACH (EXIT 4A)

- **WEDNESDAY, AUGUST 25 THROUGH FRIDAY, AUGUST 27 AND TUESDAY, AUGUST 31 THROUGH THURSDAY, SEPTEMBER 2** - The northbound I-95 ramp to I-195 East/Miami Beach (Exit 4A) will be closed as needed between the hours of 9 p.m. and 5:30 a.m. Drivers can continue north on I-95 to access the I-195 East/Miami Beach ramp (Exit 4B) located north of NW 32 Street.

*Continue reading on the next page...*

## NW 17 STREET DAYTIME CLOSURES UNDER I-95

- **WEDNESDAY, AUGUST 25 THROUGH FRIDAY, AUGUST 27 AND SUNDAY, AUGUST 29 THROUGH THURSDAY, SEPTEMBER 2** - One lane on westbound NW 17 Street under I-95 will be closed as needed between the hours of 7 a.m. and 6 p.m. to allow the contractor to work on bridge construction activities. Traffic will be flagged around the work zone.

## I-395 ONGOING CONSTRUCTION ACTIVITIES

- Installation of a temporary westbound I-395 bypass bridge over NE 1 Avenue
- Installation of Auger Cast Piles (ACP) at the Overtown Plaza alleyway between NW 3 Avenue and NW 4 Avenue
- Erection of the I-395 bridge segments just west of NW 1 Avenue and south of NW 14 Street
- Foundation construction for signature bridge arches 1 and 2 located north of I-395 and just west of NE 2 Avenue
- Excavation of signature bridge arch 4 east of Biscayne Boulevard adjacent to NE 13 Street
- Hammering/driving of steel pipes and sheets into the ground along the I-395 corridor
- Installation of reinforcing steel (rebar) at the signature bridge center pier foundation located between Biscayne Boulevard and NE 2 Avenue just north of I-395
- Construction of bridge foundations and piers adjacent to I-395 from North Bayshore Drive to west of NW 3 Avenue
- Placement of bridge segments west of NW Miami Court adjacent to NW 3 Avenue
- Construction of new entrance ramp to westbound I-395 just west of North Miami Avenue
- Construction of a temporary westbound I-395 ramp to northbound I-95
- Nighttime roadway operations on I-395 from MacArthur Causeway to I-95

*Continue reading on the next page...*



## I-395 MAINLINE LANE CLOSURES

- **WEDNESDAY, AUGUST 25 THROUGH FRIDAY, AUGUST 27 AND SUNDAY, AUGUST 29 THROUGH THURSDAY, SEPTEMBER 2** - One lane on mainline eastbound I-395 will be closed from I-95 to Biscayne Boulevard between the hours of 10 p.m. and 5:30 a.m.
- **WEDNESDAY, AUGUST 25 THROUGH SUNDAY, AUGUST 29 AND TUESDAY, AUGUST 31 THROUGH THURSDAY, SEPTEMBER 2** - One lane on mainline westbound I-395 will be closed from I-95 to Biscayne Boulevard between the hours of 10 p.m. and 5:30 a.m.

## DAYTIME LANE CLOSURE ON BISCAYNE BOULEVARD

- **WEDNESDAY, AUGUST 25 THROUGH FRIDAY, AUGUST 27 AND MONDAY, AUGUST 30 THROUGH THURSDAY, SEPTEMBER 2** - One southbound lane on Biscayne Boulevard from NE 13 Street to NW 11 Terrace will be closed between the hours of 9 a.m. and 3:30 p.m. for drainage work.

## NIGHTTIME LANE CLOSURE ON BISCAYNE BOULEVARD

- **WEDNESDAY, AUGUST 25 AND TUESDAY, AUGUST 31** - Two southbound lanes on Biscayne Boulevard from NE 13 Street to NW 11 Terrace will be closed between the hours of 10 p.m. and 5:30 a.m. for roadway work.

## WESTBOUND I-395 RAMP TO NORTHBOUND I-95 DETOUR

- **WEDNESDAY, AUGUST 25 THROUGH FRIDAY, AUGUST 27 AND TUESDAY, AUGUST 31 THROUGH THURSDAY, SEPTEMBER 2** - The westbound I-395 ramp to northbound I-95 will be closed between the hours of 10 p.m. and 5:30 a.m. Drivers can:
  - Access the southbound I-95 ramp
  - Exit at SW 7 Street/Brickell Avenue (Exit 1B), then turn left at SW 8 Street
  - Enter the northbound I-95 ramp, then continue north on I-95

TO VIEW A MAP OF THE DETOUR PLEASE [CLICK HERE](#).

## CLOSURE OF THE NORTHBOUND BISCAYNE BOULEVARD RAMP TO EASTBOUND MACARTHUR CAUSEWAY

- **WEDNESDAY, AUGUST 25 AND TUESDAY, AUGUST 31** - The northbound Biscayne Boulevard ramp to the eastbound MacArthur Causeway will be closed between the hours of 10 p.m. and 5:30 a.m. Drivers can:
  - Continue on North Biscayne Boulevard, then make a right on NW 14 Street
  - Turn right on North Bayshore Drive to access the eastbound MacArthur Causeway ramp

TO VIEW A MAP OF THE DETOUR PLEASE [CLICK HERE](#).

*Continue reading on the next page...*

## CLOSURE OF NW 14 TERRACE

- NW 14 Terrace will be closed from NW 3 Avenue to NW 2 Avenue until further notice to allow the contractor to construct bridge foundations. Drivers can use NW 15 Street as an alternate.

## CLOSURE OF NW 13 STREET AT NW 1 COURT

- A section of NW 13 Street at NW 1 Court will be closed until further notice. The closure will allow the contractor to construct bridge caps for the new I-395 bridges.

TO VIEW A MAP OF THE DETOUR PLEASE [CLICK HERE](#).

## LONG-TERM CLOSURE OF NW 1 COURT

- NW 1 Court from NW 13 Street to NW 14 Street and NW 13 Street from NW 1 Avenue to NW 1 Court will remain continuously closed until further notice to allow the contractor to work on bridges over the roadways.

TO VIEW A MAP OF THE DETOUR PLEASE [CLICK HERE](#).

## SR 836 ONGOING CONSTRUCTION ACTIVITIES

- Nighttime installation of reinforcing steel for the eastbound SR 836 ramp to northbound I-95
- Assembly of bridge beam/cap launcher in the SR 836 median just west of NW 17 Avenue
- Nighttime installation of bridge beams on eastbound SR 836 over NW 14 Street and NW 10 Avenue
- Installation of ACPs just west of the Miami River under SR 836 in the Grove Park neighborhood
- Installation of concrete bridge beams for the widening of the approach to the eastbound SR 836 ramp to northbound I-95
- Driving steel sheets into the ground along SR 836 from NW 17 Avenue to NW 12 Avenue
- Pier construction in the median area of SR 836 between NW 17 Avenue and the toll gantry and just east of NW 17 Avenue
- Foundation construction at the Richard E. Gerstein Justice Building parking area
- Foundation construction including driving steel sheets into the ground east of NW 17 Avenue and under SR 836
- Foundation construction adjacent to NW 7 Avenue between NW 14 Street and NW 15 Street
- Roadway widening activities on eastbound SR 836 from NW 10 Avenue to I-95
- Ongoing casting of bridge caps

*Continue reading on the next page...*

## SR 836 LANE CLOSURES

- **WEDNESDAY, AUGUST 25 THROUGH FRIDAY, AUGUST 27 AND SUNDAY, AUGUST 29 THROUGH THURSDAY, SEPTEMBER 2** - Up to two lanes on eastbound SR 836 from NW 17 Avenue to I-95 will be closed as needed between the hours of 9 p.m. and 5:30 a.m.
- **WEDNESDAY, AUGUST 25 THROUGH FRIDAY, AUGUST 27 AND SUNDAY, AUGUST 29 THROUGH THURSDAY, SEPTEMBER 2** - Up to two westbound lanes on SR 836 from I-95 to NW 17 Avenue will be closed as needed between the hours of 9 p.m. and 5:30 a.m.

## EASTBOUND SR 836 RAMP TO NORTHBOUND I-95 DETOUR

- **WEDNESDAY, AUGUST 25 THROUGH FRIDAY, AUGUST 27 AND MONDAY, AUGUST 30 THROUGH THURSDAY, SEPTEMBER 2** - The eastbound SR 836 ramp to northbound I-95 will be closed between the hours of 9 p.m. and 5:30 a.m. Closures on Wednesday, August 25 and Thursday, August 26 will begin at 10:30 p.m. The closure on Friday, August 27 will begin at 11 p.m. Drivers can:
  - Access the southbound I-95/NW 8 Street ramp, then exit at the NW 8 Street/PortMiami ramp
  - Turn left at NW 8 Street
  - Turn left at NW 3 Avenue to access the northbound I-95 ramp

TO VIEW A MAP OF THE DETOUR PLEASE [CLICK HERE](#).

## NORTHBOUND NW 12 AVENUE RAMP TO EASTBOUND SR 836 DETOUR

- **WEDNESDAY, AUGUST 25 AND MONDAY, AUGUST 30 THROUGH WEDNESDAY, SEPTEMBER 1** - The northbound NW 12 Avenue ramp to eastbound SR 836 will be closed between the hours of 9 p.m. and 5:30 a.m. Closures on Wednesday, August 25 will begin at 10:30 p.m. Drivers can:
  - Continue north on NW 12 Avenue, then turn left on NW 12 Street
  - Turn right on NW 13 Avenue, then turn right on NW 14 Street
  - Turn right on NW 12 Avenue to access the southbound NW 12 Avenue entrance ramp to SR 836 east

TO VIEW A MAP OF THE DETOUR PLEASE [CLICK HERE](#).

## NORTHBOUND NW 17 AVENUE RAMP TO WESTBOUND SR 836 CLOSURE FOR TRAFFIC SHIFT

- **MONDAY, AUGUST 30 THROUGH THURSDAY, SEPTEMBER 2** - The northbound NW 17 Avenue ramp to westbound SR 836 will be closed between the hours of 9 p.m. and 5:30 a.m.
  - Drivers on northbound NW 17 Avenue heading west on SR 836 can:
    - Turn west on NW 7 Street
    - Turn right on NW 27 Avenue to access the SR 836 west entrance ramp

TO VIEW A MAP OF THE DETOUR PLEASE [CLICK HERE](#).

*Continue reading on the next page...*

## FULL NW 7 AVENUE CLOSURE

- **THURSDAY, AUGUST 26, FRIDAY, AUGUST 27 AND TUESDAY, AUGUST 31 THROUGH THURSDAY, SEPTEMBER 2** - All travel lanes on NW 7 Avenue will be closed as needed from NW 17 Street to NW 14 Street between the hours of 10 p.m. and 5:30 a.m.
  - Drivers on northbound NW 7 Avenue can:
    - Turn left on NW 14 Street, then turn right on NW 12 Avenue
    - Turn right on NW 20 Street to connect with NW 7 Avenue
  - Drivers on southbound NW 7 Avenue can:
    - Turn right on NW 20 Street, then turn left on NW 12 Avenue
    - Turn left on NW 14 Street to connect with NW 7 Avenue
  - Drivers on NW 17 Street going south on NW 7 Avenue can:
    - Go west on NW 17 Street, then turn left on NW 9 Avenue
    - Make a slight right onto NW 10 Avenue
    - Turn left on NW 14 Street to connect with NW 7 Avenue

TO VIEW A MAP OF THE DETOUR PLEASE [CLICK HERE](#).

## DAYTIME NW 7 AVENUE LANE CLOSURES

- **WEDNESDAY, AUGUST 25 THROUGH FRIDAY, AUGUST 27 AND MONDAY, AUGUST 30 THROUGH THURSDAY, SEPTEMBER 2** - One southbound lane on NW 7 Avenue will be closed as needed from NW 15 Street to NW 14 Street between the hours of 9 a.m. and 3:30 p.m. to allow the contractor to work on bridge construction over the roadway.

## NW 14 STREET CLOSURE

- **WEDNESDAY, AUGUST 25 AND MONDAY, AUGUST 30** - NW 14 Street will be closed from NW 7 Avenue to NW 10 Avenue between the hours of 9 p.m. and 5:30 a.m.
  - Drivers on westbound NW 14 Street can:
    - Turn right on NW 7 Avenue, then turn left on NW 17 Street
    - Turn left on NW 9 Avenue and follow NW 10 Avenue to connect with NW 14 Street
  - Drivers on eastbound NW 14 Street can:
    - Turn left on NW 10 Avenue and follow NW 9 Avenue, then turn right on NW 17 Street
    - Turn right on NW 7 Avenue to connect with NW 14 Street

TO VIEW A MAP OF THE DETOUR PLEASE [CLICK HERE](#).

*Continue reading on the next page...*

## DAYTIME NW 17 AVENUE LANE CLOSURES

- **WEDNESDAY, AUGUST 25 THROUGH FRIDAY, AUGUST 27 AND MONDAY, AUGUST 30 THROUGH THURSDAY, SEPTEMBER 2** - One southbound and one northbound lane on NW 17 Avenue will be closed as needed from NW South River Drive to NW 8 Street between the hours of 9 a.m. and 3:30 p.m.

---

### ABOUT THE PROJECT

The I-395/SR 836/I-95 Design-Build Project will add capacity, enhance the flow of traffic and safety and improve access along I-395, SR 836 and I-95.



To view a video of the project,  
please visit:  
[I395-miami.com/project-video](http://I395-miami.com/project-video)

---

**Please note that this schedule may change due to bad weather or other unforeseen conditions.**

The work is part of the I-395/SR 836/I-95 Design-Build Project that will reconstruct the I-395 corridor from the SR 836/I-395/I-95 (Midtown) Interchange to the MacArthur Causeway Bridge, including the construction of a Signature Bridge over NE 2 Avenue and Biscayne Boulevard; double-deck SR 836 from west of NW 17 Avenue to the Midtown Interchange and the replacement of the concrete pavement on I-95 from NW 8 Street to NW 29 Street.

For additional information on the test pile work or the project please contact Oscar Gonzalez at 786-280-0983 or via email at [ogonzalez@mrgmiami.com](mailto:ogonzalez@mrgmiami.com). Additional project information can be found on the project website, [www.I-395miami.com](http://www.I-395miami.com).

---

For information on scheduled lane closures on FDOT Construction Projects that affect traffic to/from and in Miami Beach, please [click here](#).

*Continue reading on the next page...*